

BAR SOLUTIONS



▼
NEW

BAR
SOLUTIONS





PREMIUM BARWARE

BLACK ACID ETCHED FINISH

OR BRUSHED STAINLESS STEEL

Upscale barware constructed of durable 18/8 stainless steel with elegantly neutral finishes. Our barware ranges feature all the essential tools for bartenders while upgrading the look of your bar service.

- Available in neutral brushed stainless steel finish or black PVD with our unique random acid etching finish
- Full collection of products to outfit your bar
- Easy to clean, dishwasher safe
- Conveniently packaged for cash & carry

*



Item #	Description	Min Order
18/8 STAINLESS STEEL, BLACK PVD WITH RANDOM ACID ETCH FINISH		
*10904	20 oz 2-Piece Premium Cocktail Shaker	1 ea
a. *10552	18 oz 3-Piece Cocktail Shaker	1 ea
*10553	24 oz 3-Piece Cocktail Shaker	1 ea
b. 10554	18 oz Cocktail Shaker	1 ea
c. 10555	28 oz Cocktail Shaker	1 ea
d. *10556	4-Prong Strainer	1 ea
e. *10557	Julep Strainer	1 ea
f. *10558	12" Bar Spoon	1 ea
g. *10559	Muddler with Plastic Head	1 ea
h. *10560	½ oz / 1 oz Japanese Jigger	1 ea
i. *10561	1 oz / 1½ oz Japanese Jigger	1 ea
j. *10562	1 oz / 2 oz Japanese Jigger	1 ea
18/8 STAINLESS STEEL, BRUSHED FINISH		
*10520	20 oz 2-Piece Cocktail Shaker	1 ea
*10468	18 oz 3-Piece Cocktail Shaker	1 ea
*10469	24 oz 3-Piece Cocktail Shaker	1 ea
10470	18 oz Cocktail Shaker	1 ea
10471	28 oz Cocktail Shaker	1 ea
*10472	4-Prong Strainer	1 ea
*10473	Julep Strainer	1 ea
*10474	12" Bar Spoon	1 ea
*10475	Muddler with Plastic Head	1 ea

*Available as Cash & Carry

BLACK ACID ETCH FINISH

PREMIUM BARWARE



10904



10552



10553



10554



10555



10556



10557



10558



10559



10560



10561



10562



BRUSHED FINISH



10520



10468



10469



10470



10471



10472



10473



10474



10475

Brushed Stainless Steel
finish coordinates with our
existing Japanese Jiggers
(JJ1202, JJ1205, JJ1206)





NEW

PVD BARWARE

Refresh your bar assortment with our PVD barware available in gold, bronze, and gunmetal. We have all the necessary tools to make cocktails in style.

- Stainless steel with a PVD matte finish
- Easy to clean, dishwasher safe
- Conveniently packaged for cash & carry



11867



11868



11869

Item #	Description	Min Order
18/8 STAINLESS STEEL, GOLD		
11867 ▶	18 oz 2-Piece Cocktail Shaker	1 ea
a. 11813	24 oz 3-Piece Cocktail Shaker	1 ea
b. 11814	Muddler with Plastic Head (Cap; 18/0)	1 ea
c. 11815	2-Prong Strainer	1 ea
d. 11816	10 7/8" Bar Spoon	1 ea
e. 11817	1/2 oz / 1 oz Jigger	1 ea
18/8 STAINLESS STEEL, BRONZE		
11868 ▶	18 oz 2-Piece Cocktail Shaker	1 ea
11818	24 oz 3-Piece Cocktail Shaker	1 ea
11819	Muddler with Plastic Head (Cap; 18/0)	1 ea
11820	2-Prong Strainer	1 ea
11821	10 7/8" Bar Spoon	1 ea
11822	1/2 oz / 1 oz Jigger	1 ea
18/8 STAINLESS STEEL, GUNMETAL		
11869 ▶	18 oz 2-Piece Cocktail Shaker	1 ea
11823	24 oz 3-Piece Cocktail Shaker	1 ea
11824	Muddler with Plastic Head (Cap; 18/0)	1 ea
11825	2-Prong Strainer	1 ea
11826	10 7/8" Bar Spoon	1 ea
11827	1/2 oz / 1 oz Jigger	1 ea

GOLD FINISH

PVD BARWARE



11867



11813



11814



11815



11816



11817



Scan QR code to
view a video on how to
make the perfect Negroni

BRONZE FINISH



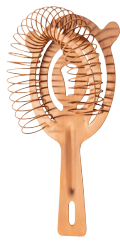
11868



11818



11819



11820



11821



11822



Scan QR code to
view a video on how to
mix up a Manhattan

GUNMETAL FINISH



11869



11823



11824



11825



11826



11827



Scan QR code to
view a video on how to
craft an Old Fashion



PVD
BAR KITS

Refresh your bar assortment with our new PVD Bar Kits available in gold, bronze, and gunmetal. We have all the necessary tools to make cocktails in style.

- Kits include: 24-ounce 3-Piece Cocktail Shaker, Jigger (0.5 oz & 1oz Capacity), 4-Prong Strainer, Muddler, and Bar Spoon
- Brushed stainless steel with PVD finish
- Easy to clean, dishwasher safe
- Conveniently packaged for cash & carry

Item	Description	Min Order
5-PIECE BAR KITS - STAINLESS STEEL (18-8), PVD FINISH		
11779	5-Piece Bar Kit, Gold	6 ea
a. 12268	5-Piece Bar Kit, Bronze	6 ea
11780	5-Piece Bar Kit, Gunmetal	6 ea





COCKTAIL

PICKS

Upgrade your cocktail with these trendy stainless steel cocktail picks. Utilize these picks by adding olives, fruits, and other garnishes to your drink. These picks aren't just great for cocktails - they also dress up your appetizers, sandwiches, charcuterie spreads, and more.

- Stainless steel construction
- Available in 4 colors
- Easy to clean, dishwasher safe
- Conveniently packaged for cash & carry



Conveniently packaged for cash & carry



Item #	Description	Min Order
COCKTAIL PICKS, STAINLESS STEEL (18-8)		
12255	Cocktail Picks 4 1/4", Set of 12	1 ea
12256	Cocktail Picks 4 1/4", Gold, Set of 12	1 ea
12257	Cocktail Picks 4 1/4", Bronze, Set of 12	1 ea
a. 12258	Cocktail Picks 4 1/4", Gunmetal, Set of 12	1 ea



WAVERLY COLLECTION™

MIXING GLASSES

Upgrade your bar assortment with our mixing glasses that come in three different designs. These are great for mixing cocktails in style.

- Easy to clean, dishwasher safe



11697



11698



11699



Item	Description	Capacity	Min Order
MIXING GLASSES—CLEAR GLASS			
11697	Diamond Cut Pattern, 3 3/4" dia x 5 3/4"	20 oz	1 ea
11698	Vertical Pattern, 3 3/4" dia x 5 3/4"	20 oz	1 ea
11699	Starburst Pattern, 3 3/4" dia x 5 3/4"	20 oz	1 ea

Scan QR code to view a video on our new Waverly Collection™.





JIGGERS

THIMBLE

Complete your bar assortment with these straight edge design thimble jiggers. The dual capacity is great for quickly and accurately measuring out your spirits.

- Stainless steel construction
- Capacity markers in oz and ml
- Dual capacity
- Easy to clean, dishwasher safe



View a video on the benefits of our Thimble Jiggers!



JIGGERS

COLORED PVD

Make cocktails in style with our colored PVD jiggers available in gold, bronze, and gunmetal.

- Stainless steel with a PVD matte finish
- Easy to clean, dishwasher safe



JIGGERS

JAPANESE & CLASSIC STYLE

- Combo, rolled edge
- 18/8 stainless steel
- Capacity stamping in oz and ml
- Capacity stamping on Japanese Jigger on outer wall and fill line on inner wall



Item #	Description	Min Order
THIMBLE JIGGERS		
a. *11414	½ oz & 1 oz (15 ml & 30 ml)	1 ea
b. *11415	1 oz & 1½ oz (30 ml & 45 ml)	1 ea
c. *11416	1 oz & 2 oz (30 ml & 60 ml)	1 ea
COLORED PVD JIGGERS		
*11817	½ oz / 1 oz Jigger, Gold	1 ea
*11822	½ oz / 1 oz Jigger, Bronze	1 ea
*11827	½ oz / 1 oz Jigger, Gunmetal	1 ea
JAPANESE STYLE JIGGERS		
*JJ1202	½ oz & 1 oz (15 ml & 30 ml)	1 ea
*JJ1205	1 oz & 1½ oz (30 ml & 45 ml)	1 ea
*JJ1206	1 oz & 2 oz (30 ml & 60 ml)	1 ea
*10560	½ oz / 1 oz Japanese Jigger	1 ea
*10561	1 oz / 1½ oz Japanese Jigger	1 ea
*10562	1 oz / 2 oz Japanese Jigger	1 ea
CLASSIC STYLE JIGGERS		
1202	½ oz & 1 oz (15 ml & 30 ml)	6 ea
1203	¾ oz & 1¼ oz (22.5 ml & 37.5 ml)	6 ea
1204	¾ oz & 1½ oz (22.5 ml & 45 ml)	6 ea
1205	1 oz & 1½ oz (30 ml & 45 ml)	6 ea
1206	1 oz & 2 oz (30 ml & 60 ml)	6 ea
H1206	1 oz & 2 oz (30 ml & 60 ml)	6 ea

THIMBLE & COLORED PVD JIGGERS



JAPANESE STYLE JIGGERS



Japanese Jiggers have a tall, slender profile compared to the Classic version

Features dual (oz/ml) capacity stamping

Coordinates with our Premium Barware (page 246)

CLASSIC STYLE JIGGERS



Classic Jiggers have a polished finish with (oz/ml) capacity stamping

Shakin' or stirred

BAR SHAKERS

MASON JAR, STAINLESS STEEL,
OR VINYL COATED

- Each 3-Piece shaker includes built-in strainer lets you separate your chilled cocktails from the ice without an additional tool



Item #	Description	Min Order
3-PIECE BAR SHAKERS-STAINLESS STEEL		
*375	8 oz	6 ea
*376	16 oz	6 ea
*377	28 oz	6 ea
PREMIUM 3-PIECE BAR SHAKERS-STAINLESS STEEL		
*276	6 oz	1 ea
*1212	12 oz	4 ea
*1217T	17 oz	8 ea
*1224	24 oz	4 ea
BEEHIVE 3-PIECE BAR SHAKERS-STAINLESS STEEL		
BH376	16 oz	1 ea
BH377	24 oz	1 ea
MASON JAR 3-PIECE BAR SHAKERS		
*MJS14	14 oz	1 ea
*MJS30	30 oz	1 ea
3-PIECE BAR SHAKERS-SAN PLASTIC		
PS378	27 oz	1 ea

*Available as Cash & Carry

Item #	Description	Min Order
ESSENTIAL COCKTAIL KIT-STAINLESS STEEL (EA = KIT)		
*BARKIT1	Each kit includes (1) 16 oz Shaker, 28 oz Shaker, 4-Prong Strainer, Julep Strainer, 9" Ice Scoop, Waiter's Corkscrew, 11" Bar Spoon and Flat Bottle Opener	1 ea
BAR SHAKER CUPS-STAINLESS STEEL		
76	16 oz	12 ea
77	28 oz	12 ea
*H77	28 oz	6 ea
BAR SHAKER CUPS-STAINLESS STEEL, VINYL COATING		
10369	16 oz, Red	6 ea
10370	16 oz, Black	6 ea
10371	28 oz, Red	6 ea
10372	28 oz, Black	6 ea
REPLACEMENT PARTS & ACCESSORIES		
375C	Cover Only, 3-Pc Bar Shaker, 8 oz	1 ea
376C	Cover Only, 3-Pc Bar Shaker, 16 oz	1 ea
377C	Cover Only, 3-Pc Bar Shaker, 28 oz	1 ea
BH376C	Tops Only for BH376	1 ea
BH377C	Tops Only for BH377	1 ea
1212CAP	Top for 1212	1 ea
1224CAP	Top for 1224	1 ea

*Available as Cash & Carry

3-PIECE BAR SHAKERS - STAINLESS STEEL

3-piece shaker includes: shaker, jigger and built-in strainer



BEEHIVE, MASON JAR & SAN PLASTIC BAR SHAKERS

ESSENTIAL COCKTAIL KIT



Top allows you to mix, strain and serve all-in-one
Add rustic charm to your cocktail service with this Mason Jar Shaker

MJS30



Break-resistant plastic shakers, ideal for busy service areas both indoors and outdoors

BPA FREE

PS378



In easy-to-stock packaging

BARKIT1

BAR SHAKER CUPS

Perfect for tin-on-tin cocktail prep

Available in 2 capacities



76



77



10371



10372

Vinyl Coated Shakers

- Provide positive grip
- Insulate bartender's hands from exposure to cold metal surface
- Color coded vessels can help reduce drink contamination during high velocity service

COMMERCIAL JUICE PRESS

- Long ergonomic handle for easy juicing
- Features corrosion resistant press that maximizes juices while reducing pulp and seeds
- Durable 3-pin construction withstands up to 2300 PSI



JP9730

Item #	Description	Min Order
COMMERCIAL JUICE PRESS		
a. JP9730	Black, 7¼ x 11 x 5¼"	1 ea
REPLACEMENT PARTS & ACCESSORIES (Not packaged as Cash & Carry)		
JP9730AC	Aluminum Cone, For JP9730 Commercial Juice Press	1 ea
JP9730F	Suction Cup Feet (Set of 4), For JP9730 Commercial Juice Press	1 set
JP9730FC	Stainless Steel Funnel Cup, For JP9730 Commercial Juice Press	1 ea
JP9730H	Black Rubber Handle, For JP9730 Commercial Juice Press	1 ea
JP9730HS	Black Rubber Handle Stop, For JP9730 Commercial Juice Press	1 ea
JP9730SC	Stainless Steel Strainer Cone, For JP9730 Commercial Juice Press	1 ea

CITRUS SQUEEZERS

- Handheld juicing tool, ideal for citrus fruits
- Color-coded for intended use
- Features a built in draining spout to eliminate seeds



V119



V119GN



10819



H119Y

PERFECTGRIP™ PARING KNIVES & BAMBOO BAR BOARD

- Convenient tools that no bar should be without
- Knife is dishwasher safe, bamboo boards are hand wash only
- Board is packed in POP Display, 12 per Display, priced per each



Item #	Description	Min Order
SQUEEZERS—COATED ALUMINUM ALLOY		
V119	Yellow	1 ea
V119GN	Green	1 ea
10819	Black	1 ea
H119Y	Yellow	1 ea
PERFECTGRIP™ PARING KNIFE		
a. 10973	7¾" Paring Knife (3½" Blade)	1 ea
BAMBOO BAR BOARD (12 per Display)		
b. HBB85	8 x 5¾ x ½"	12 ea

BAR TOOLS



H503K

501K

HS220

S209

S211

10754

H4258

4256



Ergonomic design includes textured grip for ease of use and control while delicately placing fruit peels, fresh herbs or chocolate swirls

MARTINI GLASS

- Stylish solution for serving special drinks, appetizers and desserts
- Keep items chilled in the cups until ready for serving

MCSS10



Item #	Description	Min Order
--------	-------------	-----------

BAR SPOONS-STAINLESS STEEL

*H503K	12" Spoon with Fork	1 ea
501K	11" Spoon with Red Knob	24 ea
*H501K	11" Spoon with Red Knob	12 ea
502K	12" Spoon with Red Knob	24 ea

BAR STRAINERS-STAINLESS STEEL

S209	4-Prong	1 ea
*H211	Premium 2-Prong, 18/8 S/S	6 ea
S211	Julep	1 ea
*HS220	Fine Mesh	12 ea

MUDDLERS-STAINLESS STEEL WITH PLASTIC TOP OR WOOD

12888 ▶	8½" Muddler, Black, Plastic	1 ea
*H4258	8¾" Muddler, Stainless Steel with Plastic Tip	6 ea
4256	8" Muddler, Wood	24 ea

BAR TWEEZERS-STAINLESS STEEL

a. *10754	6¼", Brushed Finish	1 ea
-----------	---------------------	------

MARTINI CUP-STAINLESS STEEL

b. MCSS10	10 oz, 4½" dia x 7"	1 ea
-----------	---------------------	------

BOTTLE/CAN OPENERS

12889 ▶	1½" x ¾ x 7", Stainless Steel	1 ea
CP42	7" Giant Can Punch, S/S	12 ea
CT109	4" Can Tapper, Nickel Plated	60 ea
396	7" Flat Pocket Bottle Opener, S/S	1 ea
*H3996	7" Flat Pocket Bottle Opener, S/S	12 ea
*H76724	Magnetic Bottle/Can Opener	6 ea

TIP CARAFE

812	3¾" dia x 10¾"	12 ea
-----	----------------	-------

*Available as Cash & Carry



CP42



CT109

396



H76724



812

SAN Plastic container with twist-off bottom





POURMASTER® ONE-PIECE NECK/SPOUT

- Integrated spout is easier to clean than traditional two-piece neck/spouts and no spout to lose, break or get clogged
- Color-coded for easy identification and quick selection at busy times
- Oval neck with textured step design provides better ergonomics
- Easy-pour bottles with clog-resistant spouts for mixers and juices
- Thicker thread, improved design with greater overlap for superior hold and leak protection
- Assorted packs include 2 of each color
- Necks are cross-compatible—our necks are interchangeable with most competitors' jars



10285A

Color-coded caps for storage and prep. Our caps fit snug and stay secure; even in fast-paced, harsh speed rail and bar environments.

Easy to disassemble for cleaning; spout and storage cap have universal treads to fit on top



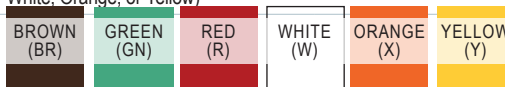
10905

Storage cap friction fits on bottom when not in use



1017_

Item #	Description	Capacity	Min Order
POURMASTER® ONE-PIECE NECK / SPOUT COMPLETES—POLYETHYLENE			
10285A	Complete, Assorted Colors	1 qt	12 ea
10905	Complete, Brown	1 qt	12 ea
10906	Complete, Green	1 qt	12 ea
10907	Complete, Red	1 qt	12 ea
10908	Complete, White	1 qt	12 ea
10909	Complete, Orange	1 qt	12 ea
10910	Complete, Yellow	1 qt	12 ea
REPLACEMENT PARTS			
10286BR	Brown Neck/Spout Only, fits 1032J, 1064J, and 1128J	—	1 ea
10286GN	Green Neck/Spout Only, fits 1032J, 1064J, and 1128J	—	1 ea
10286R	Red Neck/Spout Only, fits 1032J, 1064J, and 1128J	—	1 ea
10286W	White Neck/Spout Only, fits 1032J, 1064J, and 1128J	—	1 ea
10286X	Orange Neck/Spout Only, fits 1032J, 1064J, and 1128J	—	1 ea
10286Y	Yellow Neck/Spout Only, fits 1032J, 1064J, and 1128J	—	1 ea
*1017A	Caps for Pourmaster® Completes, Assorted		6 ea
*1032J	Jar only for Pourmaster® 32 oz		12 ea
*1017_	Cap only for Pourmaster®, (Black, Brown, Green, Red, White, Orange, or Yellow)		6 ea
*1014	Neck for Pourmaster®, Quart		1 ea
*1013A	Spouts for PourMaster® Completes, Assorted		6 ea
*1013_	Spout Only (Brown, Green, Red, White, Orange, or Yellow)		1 ea





View our video on
all the benefits of the
PourMaster® Series

POURMASTER® SERIES

- Easy-pour bottles with clog-resistant spouts for mixers and juices
- Color-coded for easy identification and quick selection at busy times
- Assorted packs include 2 of each color



Item #	Description	Capacity	Min Order
POURMASTER®-LDPE BOTTLE, HDPE TOP & CAP			
a. N32A	Long Neck Top™, Assorted Colors	1 qt	12 ea
N32VA	V-Neck Top™, Assorted Colors	1 qt	12 ea
N32LPA	Low Profile Top™, Assorted Colors	1 qt	12 ea
REPLACEMENT PARTS & ACCESSORIES			
*N14_	Pourmaster Neck for N32A (Brown, Green, Red, White, Orange, or Yellow)		1 ea
*N14V_	V-Neck Top for N32VA (Brown, Green, Red, White, Orange, or Yellow)		1 ea
*N16_	Low Profile Top for N32LPA (Brown, Green, Red, White, Orange, or Yellow)		1 ea
*N16_FLP	Low Profile Flip Hinge for Pourmaster® Low Profile Top (Brown, Green, Red, White, Orange, or Yellow)		1 ea
*N16R	Low Profile Top for N32LPA, N32LPR (Red)		1 ea
*N17_	Pourmaster™ Storage Top (Brown, Green, Red, White, Orange, or Yellow)		1 ea
*N32_	1 Qt Pourmaster®, Long Neck Top (Brown, Green, Red, White, Orange, or Yellow)		12 ea
*N32LP_	1 Qt Pourmaster®, Low Profile Top (Red, Orange, or Yellow)		12 ea
*N32J	1 Qt NSF Pourmaster® Jar		12 ea
*N32V_	1 Qt Pourmaster®, V-Neck Top (Brown, Green, Red, White, Orange, or Yellow)		12 ea



N32A



N32VA



N32LPA



POURMASTER® COMPLETES

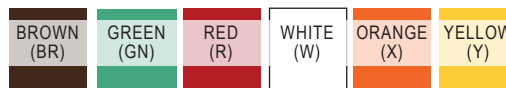
- Complete set includes: container, easy grip neck with snap-tight color pourer and a color-coded cap for easy storage
- "Assorted" includes 2 of each color for N32A, N32VA, N32LPA and 8032A
- "Assorted" includes 1 of each color for 8064A and 8128A



8032BKBK

Item #	Description	Capacity	Min Order
COMPLETES—POLYETHYLENE, SAN SPOUT			
*8032A	Complete, Assorted Colored Spouts	1 qt	12 ea
*8032BKBK	Complete, Black Bottle & Cap, Clear Spout	1 qt	12 ea
*8032BR	Complete, Natural Bottle, Brown Cap & Spout	1 qt	12 ea
*8032GN	Complete, Natural Bottle, Green Cap & Spout	1 qt	12 ea
*8032R	Complete, Natural Bottle, Red Cap & Spout	1 qt	12 ea
*8032W	Complete, Natural Bottle, White Cap, Clear Spout	1 qt	12 ea
*8032X	Complete, Natural Bottle, Orange Cap & Spout	1 qt	12 ea
*8032Y	Complete, Natural Bottle, Yellow Cap & Spout	1 qt	12 ea
8064A	Complete, Natural Bottle, Assorted Colored Spouts	½ gal	6 ea
8064X	Complete, Natural Bottle, Orange Cap & Spout	½ gal	6 ea
8128A	Complete, Assorted Colored Spouts	1 gal	6 ea
12657 ▶	Quart Complete, Assorted Caps & Spouts	1 qt	6 ea
REPLACEMENT PARTS & ACCESSORIES			
*1014BK	Neck for Pourmaster®, Black		1 ea
*1032J	Jar only for Pourmaster®, 32 oz		12 ea
*1032JBK	Jar only for Pourmaster®, Black, 32 oz		12 ea

Assorted colors include:



8032A



BACKUPS

- Includes container and color-coded cap
- "Assorted" includes 2 of each color for JC1032A
- "Assorted" includes 1 of each color for JC1064A and JC1128A
- Only available in Brown, Green, Red, White, Orange, or Yellow



BPA
FREE



JC1032A

Item #	Description	Capacity	Min Order
BACKUPS-HIGH DENSITY POLYETHYLENE			
*JC1032A	Backup	1 qt	12 ea
JC1032_	Quart, 3 $\frac{3}{8}$ " dia x 6 $\frac{3}{4}$ "	1 qt	12 ea
*JC1064A	Half Gallon Backup	$\frac{1}{2}$ gal	6 ea
JC1064_	Half Gallon, 4 $\frac{7}{8}$ " dia x 8 $\frac{3}{4}$ "	$\frac{1}{2}$ gal	6 ea
*JC1128A	Gallon Backup	1 gal	6 ea
JC1128_	Gallon, 6" dia x 10"	1 gal	6 ea
12655 ►	Pint Backup Storage Jars, 3 $\frac{3}{8}$ " dia x 3 $\frac{3}{4}$ "	1 pint	12 ea
REPLACEMENT PARTS & ACCESSORIES			
*1064J	Jar Only for JC1064A, $\frac{1}{2}$ Gal		6 ea
*1128J	Jar Only for JC1128A, 1 Gal		6 ea



JC1032_ / JC1064_ / JC1128_

PROPER POUR®

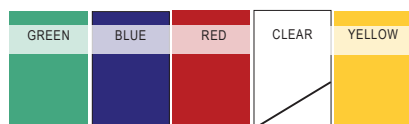
Accurately pour your craft mixes with reduced over pours, for more consistent drinks that don't rob profits

- Multi-ball technology ensures accurate measured pours and prevents evaporation
- Proper Pour® Measured Pourers have color-coded tubes allowing for easy identification
- Proper Pour® III Measured Pourers feature a non-collared pour solution, ideal for cocktail ingredients

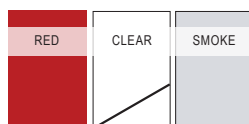


Item #	Description	Capacity	Min Order
MEASURED POURERS††			
4243A	Clear with Green Dip Tube	¾ oz	12 ea
4244A	Clear with Blue Dip Tube	¾ oz	12 ea
2246A	Red with Red Dip Tube	1 oz	12 ea
3246A	Smoke with Red Dip Tube	1 oz	12 ea
4246A	Clear with Red Dip Tube	1 oz	12 ea
2248A	Red with Clear Dip Tube	1¼ oz	12 ea
4248A	Clear with Clear Dip Tube	1¼ oz	12 ea
2249A	Red with Yellow Dip Tube	1½ oz	12 ea
4249A	Clear with Yellow Dip Tube	1½ oz	12 ea

DIP TUBE



SPOUT



Item #	Description	Capacity	Min Order
WIDEMOUTH™ POURERS-23MM OPENINGS††			
a. 3501A	Red with Red Dip Tube	1 oz	12 ea
3525A	Clear with Clear Dip Tube	1¼ oz	12 ea
PROPER POUR® III POURERS-NON-COLLARED			
148A	Red with Red Dip Tube	1 oz	12 ea
149A	Red with Clear Dip Tube	1¼ oz	12 ea

††12 Pourers per Polybag





View a video on the benefits of our pourers

Item #	Description	Min Order
FREE FLOW POURERS—STAINLESS STEEL & PLASTIC††		
330	Tapered Speed Pourer	12 ea
320A	Jet Pourer	12 ea
320C	Hinged Flip Cap Jet Pourer	12 ea
597P	Weighted Flip Cap Pourer	12 ea
598P	Hinged Flip Cap Speed Pourer Spout, Plastic Vent Tube	12 ea
ECONOMY POURERS—CHROME PLATED ABS & PLASTIC††		
670	Chrome Plated Spout, No Collar	12 ea
671	Chrome Plated Spout, Black Collar	12 ea
35C	Clear Pourer	12 ea
35R	Red Pourer	12 ea
35BK	Black Pourer	12 ea
35G	Green Pourer	12 ea
35BL	Blue Pourer	12 ea
35Y	Yellow Pourer	12 ea
35W	White Pourer	12 ea
SCREEN EM™ POURERS—PLASTIC, SANITARY SCREEN SPOUT††		
295	Clear Pourer	12 ea
295R	Red Pourer	12 ea
295X	Smoke Pourer	12 ea
FREE FLOW WHISKEY POURERS—PLASTIC††		
1810	Chrome Plated Spout, Black Collar	12 ea
PLASTIC POURERS—SANITARY SCREEN††		
33BK	Black Pourer	12 ea
POURER COVERS—PLASTIC		
DCL	Universal Liquor Pourer Cover, Translucent Clear (12 per pack)	1 pk
DCBK	Dust Cap Cover for Liquor Pourers, Opaque Black (12 per pack)	1 pk

††12 Pourers per Polybag

FREE FLOW POURERS

Provide your bartending staff with these simple pouring solutions. Assorted style options include weighted, hinged pourers with covers and built-in screens to keep liquors and customers safe.



Air vent tube ensures smooth and consistent pouring



330



320A



320C



597P

Flip top keeps liquor free of contaminants



598P



670



671



35G



295X



1810



33BK

A built-in screen helps to keep fruit flies out of mixers & complies to food safety regulations

POURER COVERS

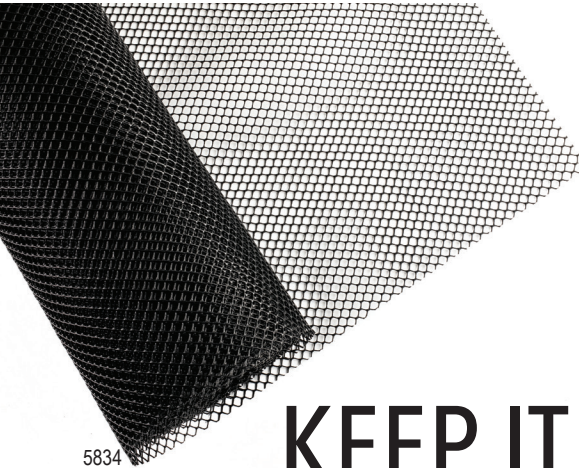
Sanitary solution to keep pesky fruit flies, dust & other contaminants out of liquor bottles.



DCL



DCBK



KEEP IT CLEAN

BAR MATS & MESH LINERS

- A sanitary way to dry and store glassware
- Non-slip, drainable mats for your washing area, shelves or other storage
- Customize any shelf, countertop, sink or cooler with a variety of sizes/styles



Item #	Description	Min Order
BAR MATS & MESH LINERS—PLASTIC, RUBBER		
5834	Black, Plastic Mesh, 2 x 40' (Roll)	1 ea
*BM1212	Interlocking, Black, 12 x 12"	1 ea
1218BK	Black, Rubber Mat, 18 x 12"	1 ea
DRIP TRAY—STAINLESS STEEL		
10482	Rectangular, 19 x 4 1/8"	1 ea

SPEED RAILS

- All speed rails are Stainless Steel
- Universal speed rails have adjustable length
- Single and Double speed rails come in 22, 32 or 42" length

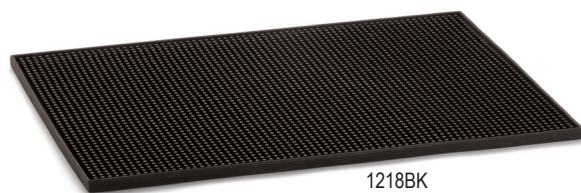
Item #	Description	Min Order
SINGLE SPEED RAILS—STAINLESS STEEL		
5122	22" (Holds (5) 1 qt Pourmaster® Completes)	1 ea
5132	32" (Holds (8) 1 qt Pourmaster® Completes)	1 ea
5142	42" (Holds (11) 1 qt Pourmaster® Completes)	1 ea
DOUBLE SPEED RAILS—STAINLESS STEEL		
5222	22" (Holds up to (10) 1 qt Pourmaster® Completes)	1 ea
5232	32" (Holds up to (16) 1 qt Pourmaster® Completes)	1 ea
5242	42" (Holds up to (22) 1 qt Pourmaster® Completes)	1 ea
REPLACEMENT PARTS & ACCESSORIES		
5200	Hanger Straps, Set of 2 (not shown)	1 set

*Available as Cash & Carry



BM1212

Interlocks for custom coverage



1218BK



10482

Fits perfectly in standard size bar rails

5122



5222





Features drain holes to prevent melted ice from watering down drinks

ICE SERVICE TOOLS



Durable and lightweight polycarbonate ice scoops

Item #	Description	Min Order
ICE SCOOPS WITH DRAIN HOLES-18/8 STAINLESS STEEL		
BSC0610	6-10 oz	1 ea
a. BSC1216	12-16 oz	1 ea
BSC2024	20-24 oz	1 ea
ICE SCOOPS-STAINLESS STEEL, ALUMINUM OR PLASTIC		
H512	4 oz Stainless Steel	1 ea
605	5 oz Aluminum †	1 ea
612	12 oz Aluminum †	1 ea
624	24 oz Aluminum †	1 ea
638	38 oz Aluminum †	1 ea
658	58 oz Aluminum †	1 ea
685	85 oz Aluminum †	1 ea
11401	6 oz Polycarbonate	1 ea
11402	12 oz Polycarbonate	1 ea
11403	24 oz Polycarbonate	1 ea
11404	32 oz Polycarbonate	1 ea
11405	64 oz Polycarbonate	1 ea
ICE AND POM TONGS-STAINLESS STEEL		
526T	6" Pom	48 ea
532T	6 1/4" Ice Tongs	48 ea
*H1246	6 3/4" Pom	6 ea
PITCHER		
364	60 oz Clear Pitcher	12 ea
SILICONE ICE MOLDS		
*BSCT2	Ice Cube, Black, (4) 1 1/4" Cubes	1 ea
*BSRT2	Ice Sphere, Black, (4) 1 1/4" Spheres	1 ea
*BSST	Shot Glass, Black, (4) 1 oz Shot Glasses	1 ea

*Available as Cash & Carry
†Hand wash only



Stainless Steel Poms and Tongs



364

BPA FREE

Crystal Clear SAN Plastic



Silicone Ice Molds:
Cube, Sphere or Shot
Glass



BPA FREE



BSRT2



BSST



Silicone molds are oven safe!
Perfect for making cake pops
or cookie shots!

GARNISH STATIONS

FIRST IN, FIRST OUT

Chillable Design - our First In, First Out Garnish Station keeps your condiments cool and fresh to meet food safety standards.



BPA FREE



View our video on all the benefits of our FIFO Garnish Stations



BCD6000

Stackable design features bottom rotating lid



BCD6000BK

ULTIMATE GARNISH STATION



Includes (1) quart and (4) pint inserts to keep condiments organized



BCD1400

All-in-one garnish station includes (5) swing out trays, (1) sponge, (1) quart inserts, (4) pint inserts and (2) side caddies

Item #	Description	Min Order
FIRST IN, FIRST OUT GARNISH STATION – BLACK ABS PLASTIC BASE, CLEAR ABS LID, POLYPROPYLENE INSERTS		
a. BCD6000	Includes (6) White 1½ pt inserts, 20 x 6½ x 6¼"	1 ea
BCD6000BK	Includes (6) Black 1½ pt inserts, 20 x 6½ x 6¼"	1 ea
REPLACEMENT PARTS & ACCESSORIES		
BCD6105	1½ pt Insert, White	1 ea
BCD6105BK	1½ pt Insert, Black	1 ea
BCD6107	1½ qt Insert, White	1 ea
BCD6107BK	1½ qt Insert, Black	1 ea
BCD6000ICE	Ice Bin Divider, Black	1 ea
BCD6000D	Bin Dividers (pack of 6)	1 pk
BCD6000L	Lid, Clear ABS	1 ea
BCD6000RL	Rotating Lid, Clear ABS	1 ea

ULTIMATE GARNISH STATION-BLACK POLYSTYRENE BASE, CLEAR (PS) LID AND POLYPROPYLENE INSERTS		
BCD1400	Includes: (1) qt, (4) pints, (2) Caddies and Integrated 5-Tray Rimming Station, 24¾ x 7¼ x 6¼"	1 ea
REPLACEMENT PARTS & ACCESSORIES		
105	1 pt Insert, White	1 ea
107	1 qt Insert, White	1 ea
667	Sponge for 666, H5633, H633 and BCD1400	12 ea
BCD1000	Quart Extension for Ultimate Garnish Station; Includes Quart Polypropylene Insert, 7¼ x 7 x 6"	1 ea
BCD200	Replacement Side Caddies for Ultimate Garnish Station, Set of 2 Caddies (left & right)	1 set

10007



Clear, lightweight, BPA-Free plastic designs with ice chamber keep your condiments ready to serve! Includes clear plastic bins which are removable for easy cleaning. Lid keeps your fruits and other garnishes fresh and free from contaminants.

- Easy to clean, handwash only
- Conveniently packaged for Cash & Carry



CONDIMENT DISPENSERS & CADDIES



BPA FREE

Item #	Description	Min Order
CONDIMENT DISPENSERS-POLYSTYRENE†		
*10006	Includes (4) 1½ pt Inserts, 16½ x 6¼ x 5"	6 ea
*10007	Includes (5) 1¼ pt Inserts, 16½ x 6¼ x 5"	6 ea
CONDIMENT DISPENSERS-BLACK ABS PLASTIC BASE, CLEAR ABS LID, WHITE POLYPROPYLENE INSERTS		
102	Includes (6) 1 pt Inserts, 19½ x 6½ x 4⅝"	1 ea
103	Includes (4) 1½ pt Inserts, 19½ x 6½ x 4⅝"	1 ea
104	Includes (3) 1 qt Inserts, 19½ x 6½ x 4⅝"	1 ea
CONDIMENT DISPENSERS-STAINLESS STEEL, CLEAR ACRYLIC LID†		
1603	Includes (4) 1 pt Inserts, Holds 4 Freeze Packs (Not Included), Enclosed Bottom, 12 x 6 x 3½"	1 ea
1604	Includes (4) 1 pt Inserts, Open Bottom, 12 x 6 x 3½"	1 ea
*H1604	Includes (4) 1 pt Inserts, (1) Stainless Steel Tongs, Open Bottom, 12 x 5½ x 3⅝"	4 ea
1605	Includes (5) 1 pt Inserts, Open Bottom, 15 x 5½ x 3⅝"	1 ea
1606	Includes (6) 1 pt Inserts, Open Bottom, 17¾ x 5½ x 3⅝"	1 ea
BAR CADDY		
101	9½ x 5¾ x 4"	1 ea
REPLACEMENT PARTS & ACCESSORIES		
4937	Freeze Pack for 1603†	1 ea
105	1 pt Insert, White	1 ea
106	1½ pt Insert, White	1 ea
107	1 qt Insert, White	1 ea
1607	Pint Insert Only	1 ea

†Hand wash only

*Available as Cash & Carry



102



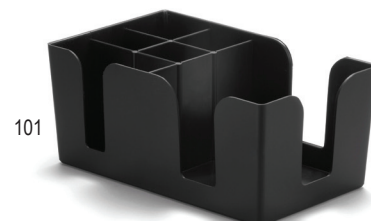
104



H1604

Pint inserts are dishwasher safe; housing and lid should be washed by hand with a non-abrasive cloth

Tongs included



101



4937

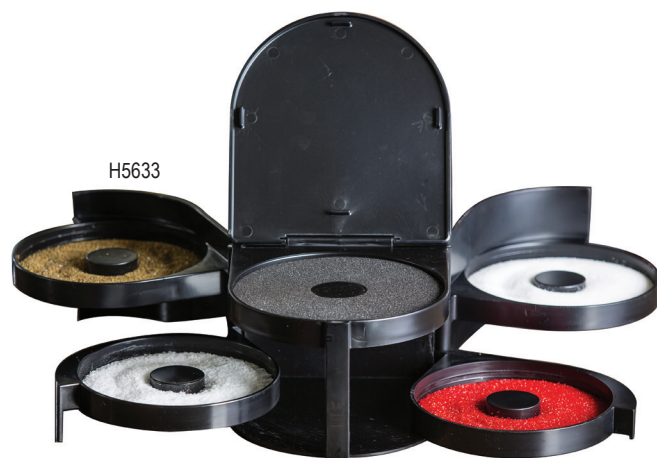
Keep your straws, stirrers, and cocktail picks easily accessible and organized—Our Cocktail Straws (100105) fit perfectly (page 131) and we offer a wide variety of picks to garnish your drinks (page 108)

...and sugar
on top



View a video on all the
benefits of our 2-Piece
Glass Rimmer

GLASS RIMMERS



666



Item #	Description	Capacity	Min Order
GLASS RIMMERS-POLYSTYRENE			
*H5633	4 Swing Out Trays and 1 Sponge Tray, Black		1 ea
GLASS RIMMERS-ABS PLASTIC OR POLYPROPYLENE, TPE PLASTIC LID			
*666	3 Swing Out Trays and 1 Sponge Tray, Black, ABS Plastic		1 ea
*H633	3 Swing Out Trays and 1 Sponge Tray, Black, ABS Plastic		4 ea
*H634	2-piece, Polypropylene, TPE Lid		6 ea
REPLACEMENT PARTS & ACCESSORIES			
667	Sponge for 666, H5633, and BCD1400		12 ea
RESEALABLE JARS-GLASS			
*CJS12	Set of 4 Jars, Glass	12 oz	1 set
JARS HOLDERS-BLACK POWDER COATED STEEL, WOOD HANDLES			
CJS12R	Holds 4 (CJS12 or 10112), 18¼ x 5 x 4½" (Jars not included)	—	1 ea

*Available as Cash & Carry

RESEALABLE JARS & HOLDERS

- Store and serve your condiments in unique style
- Jar features clip-top lid, perfect for storage
- Coordinating racks (sold separately) fit on or behind the bar



CJS12R

CJS12

COCKTAIL/BEER GLASS SETS

- Perfect for serving a variety of drinks from cocktails to beers
- Mason style glasses or vintage design
- Pairs perfectly with FLIGHT1 & FLIGHT2



Item #	Description	Capacity	Min Order
COCKTAIL / BEER GLASS SET			
FLBEER4	4½ oz Mason Jar Glasses (4 per Pack)	(4) 4½ oz	1 pk
FLGLASS4	4 oz Vintage Style Glasses (4 per Pack)	(4) 4 oz	1 pk
PADDLE FLIGHTS			
FLIGHT1	Bamboo, Holds 4 Glasses (Up to 2¼" dia) 17 x 4 x ¾"	—	1 ea
FLIGHT2	Acacia, Holds 4 Glasses (Up to 2¼" dia) 17 x 4 x ¾"	—	1 ea
20002	Better Burger Spatula Drink Flight	—	1 ea

PADDLE FLIGHTS

- Charming paddles with cut-out sections to hold glasses
- Reversible to accommodate FLGLASS4 & FLBEER4 (glasses not included)
- Features a slot to display your flight tasting cards



TO-GO POUCHES

Pack up your house beverages to-go with TableCraft's plastic beverage pouches. Perfect for carry out and to-go beverages for your customers to enjoy from the comforts of their own homes. Translucent polyethylene pouch design opens so you can stand it up; making filling and prepping simple and easy. See page 130 for more usage ideas.



Item #	Description	Count Per Pack	Min Order
TO-GO POUCHES, TRANSLUCENT POLYETHYLENE MATERIAL			
a. 10681	10 oz Pouch	100	1 pk
b. 10682	16 oz Pouch	100	1 pk
c. 10683	32 oz Pouch	100	1 pk
CASH & CARRY TO-GO POUCHES, TRANSLUCENT POLYETHYLENE MATERIAL			
10883	10 oz Pouch	50	1 pk
10884	16 oz Pouch	50	1 pk

*Straws not included



FLBEER4



FLGLASS4

Reversible Paddle with 4 square cutouts on one side and 4 circular cutouts on the other
Square cutouts fit 2¼" x 2¼" glass



FLIGHT1

Slot for placement
option of tasting cards



FLIGHT2



Works with our paper straws, see page 131 to check out coordinating straws that you can pack up with the to-go pouch!



10884



Available for
CASH & CARRY

see more options
on page 130

WINE COOLERS

Modernize your wine cooler assortment with our sleek wine coolers available in silver, gold, and black. They offer a double wall stainless steel construction to reduce condensation while serving chilled wine or champagne.

- Stainless steel with black and gold PTFE coating
- Easy to clean, dishwasher safe



12053



12054



12055



RIB76

10700 / 10701

Double wall Stainless Steel construction to reduce condensation while serving chilled wine, champagne or ice

ASSORTED WINE COOLERS & STAINLESS STEEL ICE BUCKETS



Item #	Description	Capacity	Min Order
ROUND DOUBLE WALLED WINE COOLER – STAINLESS STEEL			
12053	4 3/4" dia x 7 7/8", Stainless Steel, Gold PTFE Finish	Holds 4 1/4" dia Bottle	1 ea
12054	4 3/4" dia x 7 7/8", Stainless Steel, Black PTFE Finish	Holds 4 1/4" dia Bottle	1 ea
12055	4 3/4" dia x 7 7/8", Stainless Steel, Vintage Finish	Holds 4 1/4" dia Bottle	1 ea
ICE BUCKETS, WINE SERVERS & COOLERS–STAINLESS STEEL, MARBLE OR SAN'S PLASTIC			
RIB76	Double Wall Ice Bucket, Stainless Steel, 6" dia x 6 1/2" H	58 oz	1 ea
10700	Double Wall Ice Bucket, Stainless Steel, 6" dia. x 6 1/2"	55 oz	1 ea
10701	Double Wall Wine Cooler, Stainless Steel, 4 3/8" dia. x 7 1/4" H	Holds 4 1/4" dia bottle	1 ea
*H303	Double Wall Ice Bucket, Stainless Steel, Includes Tongs, 7 3/4" dia x 8 3/4"	120 oz	1 ea
*5488	Marble Wine Cooler, Black, 5" dia x 7" H	Holds 4" dia bottle	1 ea
*5488W	Marble Wine Cooler, White, 5" dia x 7" H	Holds 4" dia bottle	1 ea
PB5119	SAN Plastic Wine Cooler, Clear, 8 5/8 x 7 1/4 x 9"	2 3/4 qt	1 ea
PB5120	SAN Plastic Wine Bucket with Handles, Clear 8 1/2 x 8 1/2 x 8 3/8"	3 1/2 qt	1 ea
12929 ▶	Single Wall Wine Bucket, Stainless Steel w/ Handles, 8 1/2" dia x 8 1/4" H (Fits Stands 5288 & 5398)	4 1/2 qt	1 ea
12930 ▶	Single Wall Wine Bucket, Stainless Steel w/ Knobs, 8 1/2" dia 8" H (Fits Stands 5288 & 5398)	4 1/2 qt	1 ea
12931 ▶	Double Wall Wine Bucket, Stainless Steel, Gold PVD, 8 3/4" dia x 8 3/4" H (Fits Stands 5288 & 5398)	5 qt	1 ea
12932 ▶	Double Wall Wine Bucket, Stainless Steel, 8 1/4" dia x 8 1/2" H (Fits Stands 5288 & 5398)	4 1/2 qt	1 ea

*Available on Cash & Carry

PB5119



BPA FREE

BPA-Free, water clear plastic construction

Great for poolside, indoor and outdoor beverage service or room service



H303



12929



12931



WINE FLIGHTS



- An appealing and convenient way to serve wine tastings
- Holds up to (3) 5" dia wine glasses (Not Included)

Item #	Description	Min Order
WINE FLIGHTS- BLACK POWDER COATED STEEL		
WF200BK	Black Powder Coated, 7½" dia x 14¼"	1 ea

CHAMPAGNE / WINE BUCKETS & STANDS

Our Champagne/Wine Buckets & Stands are great for keeping champagne on ice or wines chilled without taking up valuable tabletop space.

Item #	Description	Capacity	Min Order
CHAMPAGNE/WINE BUCKETS & STANDS-ASSORTED FINISHES			
5188	Stainless Steel Bucket, Mirror Finish, 8¾" dia x 10" H (Fits Stand 5288)	8 qt	1 ea
5288	Chrome Plated Bucket Stand (Fits 5188)	-	1 ea
RWB119	Stainless Steel Double Wall Bucket, Rice Pattern, 8¾" dia x 9¾" H (Fits stand 5398)	4 qt	1 ea
5198	Stainless Steel Bucket, Hammered Finish, 8" dia x 8½" H (Fits stand 5398)	4½ qt	1 ea
5398	Stainless Steel, Mirror Finish Bucket Stand (Fits 5198 & RWB119)	-	1 ea
RS1432	Stainless Steel, Rice Pattern, Martini Glass Beverage Stand, 14½" dia x 32½"	4½ qt	1 ea
a. RS2132	Stainless Steel, Rice Pattern, Round Beverage Stand with Handle, 16" dia x 32"	10¼ qt	1 ea



Bucket	Stand
5188	Fits 5288
5288	Fits 5188
RWB119	Fits 5398
5198	Fits 5398

WF200BK

5½" maximum
stem length

Also a convenient option to serve
your condiments and sides



Fits the following ramekin options:
5063, 5066, 5068, 5071, 5072, 10768,
10789, 240002, 240010 & GRS83





WINE & CHAMPAGNE SERVING TOOLS



Item #	Description	Min Order
WINE/CHAMPAGNE SERVING TOOLS		
1226	Waiter's Corkscrew, Black Plastic Handle	1 ea
1228	Premium Wine Key Corkscrew, Curved Blade, Stainless Steel	1 ea
*H1228C	Premium Waiter's Corkscrew, Curved Blade, Stainless Steel	6 ea
*H1230C	Waiter's Corkscrew, Black Rubber-Like Handle	6 ea
*H1235	Foil Cutter	12 ea
398	Champagne Bottle Sealer, Stainless Steel	1 ea
a. *H398	Champagne Bottle Sealer, Stainless Steel	6 ea
1229	Premium Winged Corkscrew	1 ea
*H1229	Premium Winged Corkscrew	6 ea
1225	Winged Corkscrew	1 ea
*H1225C	Winged Corkscrew	6 ea

*Available as Cash & Carry



a

ASHTRAYS



Item #	Description	Min Order
2-PIECE WINDPROOF – BLACK MELAMINE		
WPA5BK	Black, 4½ x 4½ x 2"	12 ea
CLASSIC STACKING DEEPWELL – BLACK PHENOLIC OR RED MELAMINE		
263B-1	Black, 4" dia x 1¾"	72 ea
265R-1	Red, 4" dia x 1¾"	72 ea
*C263B-1	Black, 4" dia x 1¾", (12 per pack)	6 pk
ECONOMY STACKING DEEPWELL – BLACK PHENOLIC OR RED MELAMINE		
ST365R-1	Red, 3¾" dia x 1¾"	72 ea
*CST363B-1	Black, 3¾" dia x 1¾" (12 per pack)	6 pk
a. 131B	Black, 3" dia x 1¼"	144 ea
341B-1	Black, 7" dia x 1½"	72 ea

*Available as Cash & Carry

2-PIECE WINDPROOF



WPA5BK

CLASSIC STACKING DEEPWELL



263B-1



265R-1

ECONOMY STACKING DEEPWELL



ST365R-1



CST363B-1



341B-1