

Part No. 59406CR
Revised: FEB 2009

FunPop CART

Assembly Manual
Model # 2649 CARTS

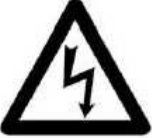






 **GOLD MEDAL**®

FUNFOOD EQUIPMENT & SUPPLIES

Cincinnati, OH 45241-4807 USA

SAFETY PRECAUTIONS

	<p style="text-align: center;">⚠ DANGER</p> <p>Machine must be properly grounded to prevent electrical shock to personnel. Do NOT immerse the equipment in water.</p> <p>Always unplug the equipment before cleaning or servicing.</p>
	<p style="text-align: center;">⚠ WARNING</p> <p>ALWAYS wear safety glasses when servicing this equipment.</p>
	<p style="text-align: center;">⚠ WARNING</p> <p>Any alterations to this equipment will void the warranty and may cause a dangerous situation. NEVER make alterations to the equipment. Make sure all machine switches are in the off position before plugging the equipment into the receptacle.</p>
	<p style="text-align: center;">⚠ CAUTION</p> <p>Do NOT allow direct contact with this equipment and the general public when used in food service locations. Only personnel that are trained and familiar with the equipment should operate the equipment. Carefully read all installation instructions before operation.</p>
	<p style="text-align: center;">⚠ CAUTION</p> <p>This machine is NOT to be operated by minors. Minors are classified as anyone under the age of 18.</p>

NOTE

The information, specifications and illustrations contained in this manual represent the latest data available at time of publication. Right is reserved to make changes as required at the discretion of Gold Medal Products Company without notice.

INSTALLATION INSTRUCTIONS


Checking Shipment

Unpack all cartons and check thoroughly for any damage that may have occurred during transit. Damage claims should be filed immediately with the transportation company. It is your responsibility to file claim immediately.

CARE AND CLEANING

To properly clean cart, wipe excess grease and residue using a clean cloth. If further cleaning is required, use Gold Medal's Watchdog Concession Equipment Cleaner – item number 2580.

	<p style="text-align: center;">⚠ WARNING</p> <p>Adequate eye protection must be used when servicing this equipment to prevent the possibility of injury.</p>
---	---

	<p style="text-align: center;">⚠ CAUTION</p> <p>This equipment is sold for commercial use only. Only personnel that are trained and familiar with the equipment should operate the equipment. Carefully read all installation, and operating instructions before operating the equipment.</p>
--	---

<p style="text-align: center;">NOTE</p> <p>The information, specifications and illustrations contained in this manual represent the latest data available at time of publication. Right is reserved to make changes as required at the discretion of Gold Medal Products Company without notice.</p>

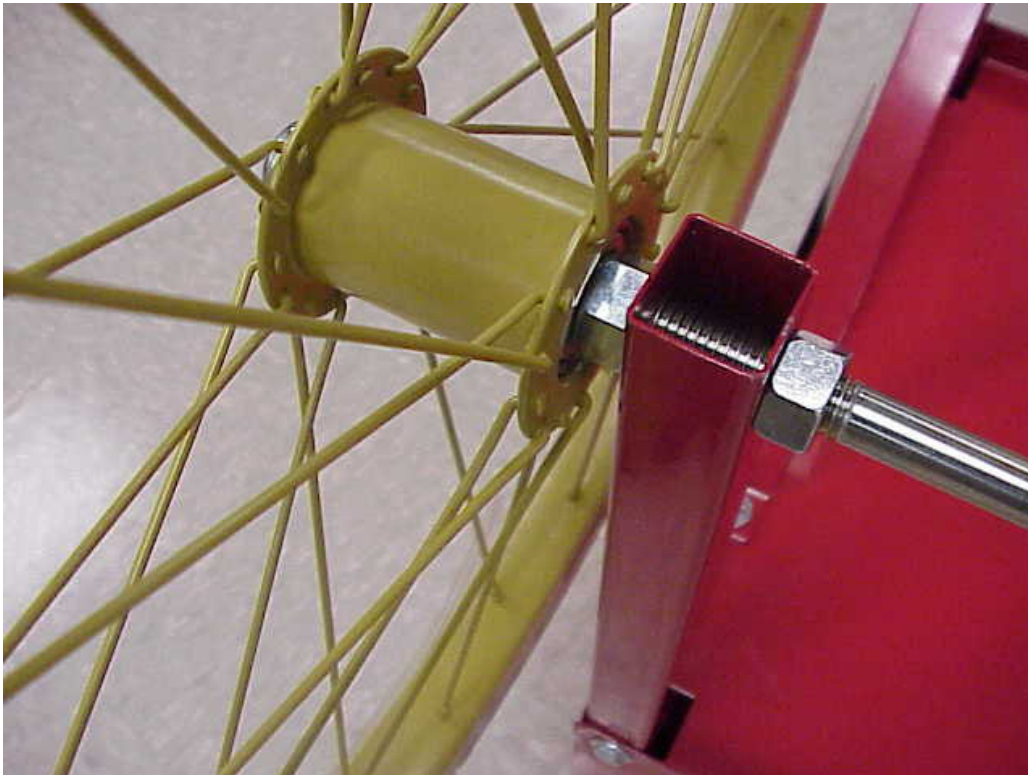
ORDERING SPARE PARTS

1. Identify the needed part by checking it against the photos, illustrations, and/or the parts list.
2. When ordering, please include part number, part name, and quantity needed.
3. Please include your model name, serial number, and date of manufacture (located on the machine nameplate) with your order.
4. Address all parts orders to:

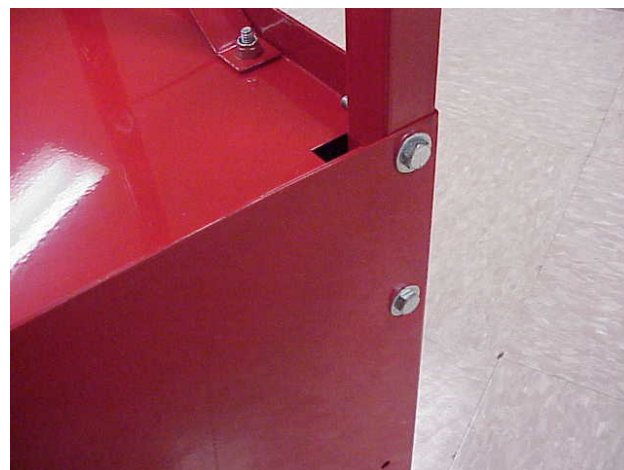
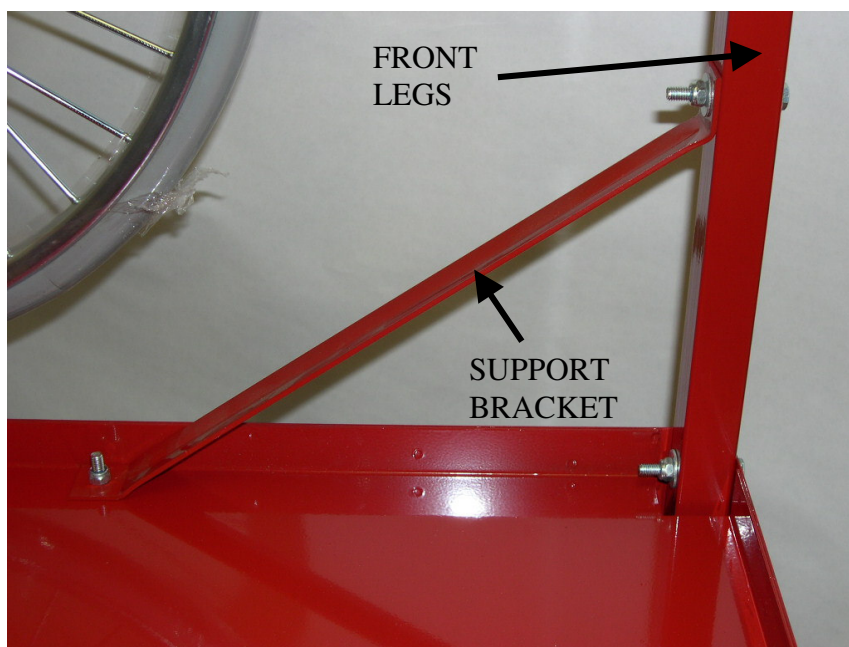
Parts Department
Gold Medal Products Co.
10700 Medallion Drive
Cincinnati, Ohio 45241-4807
(800) 543-0862
(513) 769-7676
Fax: (513) 769-8500
E-mail: info@gmpopcorn.com

or, place orders online at:
Web Page: www.gmpopcorn.com

1. **PRE-ASSEMBLE THE LEGS/AXLE ASSEMBLY.** ASSEMBLE NUT ONTO AXLE AS SHOWN BELOW, TIGHTEN NUT TILL IT ALMOST BOTTOMS OUT ON THE THREADS. SLIDE ON CART LEG (THRU THE AXLE HOLE), INSTALL SECOND NUT LOCKING THE LEG BETWEEN THE TWO NUTS. REPEAT FOR OTHER SIDE.



2. ASSEMBLE THE LEG / AXLE ASSEMBLY (WITHOUT WHEELS) TO THE CABINET ON THE SIDE OPPOSITE THE HANDLEBAR. USE (4) 1 3/4" SCREWS, (4) NUTS, (4) WASHERS PUT THE WASHERS UNDER THE NUTS. TIGHTEN
3. WITH THE AXLE / LEG ASSEMBLY INSTALLED ON TO THE CABINET, SLIDE THE WHEELS ONTO THE AXLE, INSTALL LOCK NUTS AND TIGHTEN THE NUT ENOUGH TO TAKE UP CLEARANCE. DO NOT OVER TIGHTEN OR YOU MAY BEND THE LEGS.
4. ASSEMBLE THE FRONT LEGS (WITHOUT AXLE HOLES) TO THE CABINET ON THE SIDE OF THE HANDLEBAR. USE (4) 1 3/4" SCREWS, (4) NUTS, (4) WASHERS.



5. INSTALL THE LEG SUPPORT BRACKET TO THE LEGS USING 1 ¾ BOLTS AND CABINET USING THE 1" BOLTS, PLACING WASHERS ON EACH SIDE. .

6. INSTALL THE ADJUSTABLE FEET / LEVELERS.

7. TURN THE ASSEMBLY OVER WITH THE WHEELS AND LEGS ON THE FLOOR. RECHECK TO MAKE SURE ALL NUTS ARE TIGHT.

8. ASSEMBLE HANDLEBAR AND BRACKETS, INSTALL ONTO CABINET WITH (4) ¼ -20 BOLTS, WASHERS, AND NUTS. TIGHTEN

9. INSTALL THE DOOR KNOB.

10. REMOVE ADHESIVE TAPE FILM, AND CAREFULLY INSTALL POPPER BY SETTING IN PLACE.

11. ADJUST FEET TO ENSURE POPPER AND CART ARE LEVEL.



PARTS INCLUDED IN THIS CARTON

(WHEN ORDERING PARTS PLEASE SPECIFY CART COLOR AND MODEL NUMBER)

<u>PART #</u>	<u>QTY</u>	<u>DESCRIPTION</u>
55096	1	CABINET
52018	2	WHEELS – 18 INCH
55090	2	LEGS WITH AXLE HOLE
55091	2	LEGS WITHOUT AXLE HOLE (FRONT)
77566	2	LEG SUPPORT BRACKET
55012	1	AXLE ½” DIA.
54099	2	LEVELING FEET ASSEMBLY
55087	1	DOOR
55094	1	HANDLE BAR
55093	2	HANDLE AR BRACKET
42361	16	¼” NUT WITH NYLON INSERT
82263	6	¼” X 1” HEX HEAD SCREW
82437	10	¼” X 1 ¾” HEX HEAD SCREW
10000	26	¼” FLAT WASHER
83222	4	1/2” NUT (FOR AXLE)
83221	2	1/2” LOCK NUT (FOR WHEEL)
47561	1	MAGNETIC CATCH
47120	1	KNOB

WARRANTY

WE WARRANT to the original purchaser the Gold Medal equipment sold by us to be free from defects in material or workmanship under normal use and service. Our obligation under this warranty shall be limited to the repair or replacement of any defective part for a period of six (6) months from the date of sale to the Original Purchaser with regard to labor and two (2) years with regard to parts and does not cover damage to the equipment caused by accident, alteration, improper use, voltage, abuse, or failure to follow instructions.

THIS WARRANTY IS IN LIEU OF ALL OTHER WARRANTIES EXPRESSED OR IMPLIED, AND OF ALL OTHER OBLIGATIONS OR LIABILITIES ON OUR PART, INCLUDING THE IMPLIED WARRANTY OF MERCHANTABILITY. THERE ARE NO WARRANTIES WHICH EXTEND BEYOND THE DESCRIPTION ON THE FACE HEREOF. We neither assume, nor authorize any other person to assume for us, any other obligation or liability in connection with the sale of said GOLD MEDAL equipment or any part thereof.

The term "Original Purchaser" as used in this warranty shall be deemed to mean that person, firm, association, or corporation who was billed by the GOLD MEDAL PRODUCTS COMPANY, or their authorized distributor for the equipment.

THIS WARRANTY HAS NO EFFECT AND IS VOID UNLESS THE ORIGINAL PURCHASER FIRST CALLS GOLD MEDAL PRODUCTS COMPANY AT 1-800-543-0862 TO DISCUSS WITH OUR SERVICE REPRESENTATIVE THE EQUIPMENT PROBLEM, AND, IF NECESSARY, FOR INSTRUCTIONS CONCERNING THE REPAIR OR REPLACEMENT OF PARTS.



GOLD MEDAL PRODUCTS COMPANY

10700 Medallion Drive

Cincinnati, Ohio 45241-4807 USA

www.gmpopcorn.com

Phone: 1-800-543-0862

Fax: 1-800-542-1496

© The text, descriptions, graphics and other material in this publication are the proprietary and exclusive property of Gold Medal Products Company and shall not be used, copied, reproduced, reprinted or published in any fashion, including website display, without its express written consent.